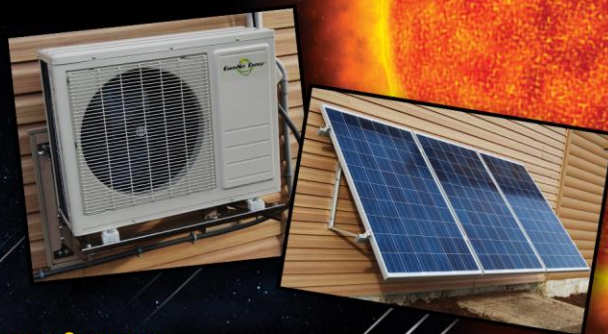


THE EarthNet ENERGY[®] ADVANTAGE



ENE ACDC12 SOLAR UNIT

- PROVIDES DUCTLESS HEATING & COOLING
- 35+ SEER (WITH SOLAR PANELS)
- KEEPS AREAS COMFORTABLE FOR PENNIES PER DAY
- HEATS AND COOLS UP TO 750 SQ. FT.
- COMPATIBLE WITH 50 AND 60 HZ POWER
- SAVES ENERGY YEAR ROUND
- MULTIPLE UNITS FOR LARGER AREAS
- REMOTE CONTROLLED
- COLORS AVAILABLE FOR INDOOR UNITS

230 WATT POLYCRYSTALLINE SOLAR MODULES

- HIGH CELL EFFICIENCY WITH QUALITY SILICON MATERIAL FOR LONG TERM OUTPUT, STABILITY AND RELIABILITY
- DESIGNED FOR HIGH MECHANICAL STRENGTH AND EASY INSTALLATION
- OUTSTANDING ELECTRICAL PERFORMANCE UNDER HIGH TEMPERATURE AND LOW RADIANCE CONDITIONS
- 25 YEAR COMPLETE MANUFACTURER MODULE WARRANTY

RACKING SYSTEMS

- RACKING SYSTEMS DESIGNED FOR ADJUSTABILITY AND EASE OF INSTALLATION
- HEAVY DUTY STEEL WITH HOT DIPPED GALVANIZING AND/OR 6063 ALUMINUM WITH ANODIZING
- 304 STAINLESS STEEL HARDWARE
- PITCHED, FLAT ROOF, WALL AND GROUND MOUNTING KITS FOR ANY APPLICATIONS

PACKAGE ACCESSORIES

- ACDC12 STAINLESS STEEL WALL MOUNTING BRACKET
- 16 FT. LINE SET
- MC4 CABLING AND CONNECTORS

A u t h o r i z e d D e a l e r

Power AC	1Ph 220V, 50/60Hz	Operating Range (Cooling/Heating)	20F-122F/5F-90F
Power DC	30 VDC	Outdoor Noise Level	55 db
Cooling Capacity	11000 Btu/h	Outdoor Fan Motor	Panasonic DC
Power Input @ Full Cooling Operation	920W	Outdoor Fan Input	35W DC
Avg. Power Consumption, Cooling	735W	Outdoor Air Flow	1295 CFM
SEER (With Solar Panels)	35+	Outdoor Unit Dimension (W*D*H)	30" x 11.2" x 23.2"
Heating Capacity	12000 Btu/h	Compressor	BLDC DC Inverter (Rotary)
Power Input @ Full Heating Operation	1025W	Refrigerant	R410A / 46oz.
Avg. Power Consumption, Heating	836	Line Set	13.1' Standard
HSPF	10.1	Max. Lineset Length /Elevation	65 ft. / 26 ft.
Indoor Fan Motor	Panasonic DC	Moisture Removal	.25 G/h
Indoor Fan Input	20W DC	Rated Current (RLA)	5.3A
Indoor Fan RPM (Hi/Med/Lo)	1250/900/700	Locked Rotor Amp (LRA)	10A
Indoor Air Flow (Hi/Med/Lo)	412/295/235 CFM	Refrigerant Oil	VG74 / 17 oz.
Indoor Noise Level (Hi/Med/Lo)	39/29/26 dB	Design Pressure	550/340 PSIG
Indoor Unit Dimensions (W*D*H)	35.5" x 6.5" x 11.2"	Liquid Side/ Gas Side	1/4" / 1/2"
Solar Power Input (Max.)	700W	DC Connection / Wire	MC4 / AWG 14

95 BRIM BLVD CHAMBERSBURG, PA 17201
717-414-7652 WWW.EARTHNETENERGY.NET